



Basic PLUS Enrolment Form

Name: _____

Address: _____

Phone: _____

Client Number: _____

(if required by Work and Income Case Manager)

Email enrolment to

alison@earthlink.org.nz To confirm attendance, call 04 567 7111 *opt. 4*

Course fees of \$150.00 may be covered by Work & Income through **Course Participation Assistance**.

Case managers; please pay Earthlink directly using clients surname as a reference.

If you are not eligible for Work and Income support, please contact Earthlink on **04 567 7111**

To receive your certificate, you **must** attend the full training and complete the required forms.

By completing this enrolment, you give Earthlink permission to share your information with Medic First Aid for course attendance and certificate allocation.

Once the enrolment has been confirmed, you must notify us no less than 48 hours prior to a course date if you need to cancel or rebook. Failure to advise us or to attend without notice may result in no refund or no future enrolments being accepted.



PLAIN First Aid

Ordinary First Aid training can be information-packed and overwhelming - This style of learning isn't suitable for everybody.

We offer PLAIN First Aid - Our take on First Aid necessities, such as personal safety and basic common aid, but with large focus on what to expect when calling for emergency services (111).

If an organisation wants to book or host training, we can design it to meet the needs and abilities of those attending.

If this is something you or your organisation are interested in, please get in touch.



Earthlink Incorporated

25 Peterkin Street,
Taita, Lower Hutt

04 567 7111

www.earthlink.org.nz
office@earthlink.org.nz

Facebook: EarthLink Inc
TradeMe: earthlinkinc

Earthlink Incorporated



First Aid

Āwhina Tuatahi

Registered and recognised certification, that meets WorkSafe NZ content requirements.

We can provide customised courses to meet needs - learning difficulties, physical barriers or mental/emotional considerations.

If you meet Work and Income criteria, your training and travel costs could be **FREE!**
Ask us what we can do for you!

Basic PLUS First Aid.

Our Course Meets the Content Guidelines of WorkSafe NZ.

Level 2 equivalent - Excludes formal assessments.

Our training includes visual and verbal presenting, interactive activities, video scenarios and personal experience/ information sharing.

In our Basic PLUS programme, we cover activities and topics such as, but not limited to;

- What is First Aid
- Protecting yourself
- Legal considerations
- Useful acronyms
- CPR and AED/Defib
- Recovery position
- Emotions and support

To enrol on the next course:

Call 04 567 7111 opt. 4

Or email:

alison@earthlink.org.nz

Registered & Recognised

We offer customised courses to meet your needs, whether that be learning difficulties, physical barriers, anxiety, or otherwise - just let us know.

Other Ways We Can Help

- Support through potentially triggering topics
 - Participation acknowledgement
 - Potential access to MSD financial support
- PLAIN First Aid Training - for more information, read further or contact us.

Earthlink values equipping people with tools to thrive and gain personal wellness and well-being. We aim to deliver informative and fun learning opportunities.

To learn more about Earthlink:

www.earthlink.org.nz

Facebook page, [EarthLink Inc](#)

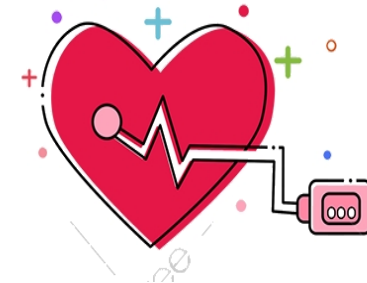


Our scenario-based training helps to gain knowledge and practical skills, without the stress of tests or marking.

Our casual, yet informative, structure allows and encourages connection, communication and fun while we learn.

Rather than writing notes and trying to remember all the information, you get a book with tips and tricks we'll cover & more!

Working together to learn new things, while sharing knowledge and experience to teach and encourage others.



Can you Restart a Heart?

Control Bleeding?

Save A Choking Person?

Help in an Emergency?

Can You Deliver First Aid?